



# FEDERAL DEMONSTRATION PARTNERSHIP

## Redefining the Government & University Research Partnership



FEDERAL DEMONSTRATION PARTNERSHIP  
Redefining the Government & University Research Partnership

ns Data Access Help Resources FDP Website

### FDP Expanded Clearinghouse

Welcome to the FDP Expanded Clearinghouse online system. This publicly available website provides online organizational profiles containing entity-based information needed by pass-through entities when they are issuing subawards or monitoring their subrecipient entities. It is the result of the FDP Pilot Project that effectively demonstrated a significant reduction of administrative burden.

Participating Organizations (listed under "Participating Organizations") have agreed to review each other's published profiles in lieu of sending/receiving individual subrecipient commitment forms containing the information posted on their profile. Minor exchanges of data that are transaction/subaward specific (e.g., such as an IRB approval, Statement of Work, or budget) may occur between the pass-through entity and the subrecipient, provided that such exchanges do not require completion of data already appearing on the entity's published profile. Participating Organizations have also agreed to make their profile information fully available to the public and ensure the information is up-to-date.

#### What information is available in the organization profiles?

Data included for each published organizational profile has been certified as correct by an applicable institutional official, reviewed for accuracy by the FDP Expanded Clearinghouse Subcommittee, and includes the following:

- Most recent Single Audit
- F&A and fringe benefit rates
- Suspension and debarment
- PHS financial conflict of interest policy
- Federalwide Assurance number and other compliance-related information
- Federal identifiers (DUNS/UEI, EIN, CAGE, etc.), and
- Organizational contact information (authorized official, FFATA, financial, COI, etc.) that are commonly needed for various types of subawards.

All published profiles can be accessed by clicking on "Participating Organizations" at the top and are publicly available without logging into the system. The FDP Clearinghouse Subcommittee monitors the profiles regularly to ensure the data is current, to the best of our abilities. Keeping the profile information accurate and current is the responsibility of the Expanded Clearinghouse Participating Organization.

#### View the Organization Profiles

[Find an Organization](#)

#### How does an organization join the FDP Expanded Clearinghouse and/or include their profile?

All FDP members have profile(s) included in this system. In addition, the FDP invites a limited number of non-FDP members to participate in the Expanded Clearinghouse on a quarterly basis. Annual subscription fees for Expanded Clearinghouse participation by non-FDP members are \$1000 per year for 2021-2023 and \$1500 per year for 2024-2026 and are pro-rated if joining mid-year.

The Expanded Clearinghouse is currently only able to accommodate Single-Audit entities. FDP has not made a decision at this time when non-Single Audit entities will be invited into the Clearinghouse.

If you are interested in joining the Expanded Clearinghouse, please review the Profile Participation Agreement and complete our survey to add your institution to our list of interested parties.

If participation is opened more broadly, we will contact you with information about the requirements for joining. FDP has not made a decision at this time whether non-Single Audit entities will be invited into the Clearinghouse.

Whether your organization is or is not a Single Audit entity, please remember that Clearinghouse participation or FDP membership is not required in order to view and use all of the posted profiles now in the Clearinghouse. You are welcome and encouraged to view the posted profiles of the 200+ current participants and use that information for your subrecipient risk assessments and monitoring purposes. You do not need a login to do this; please click on the "Find an Organization" button at the top to find a profile. For Participating Organizations

For Participating Organizations with log in rights, please log in below

[Proceed to Log In page >](#)

# FDP Expanded Clearinghouse

[fdpclearinghouse.org](http://fdpclearinghouse.org)

## Presenters:

Lynette Arias, University of Washington

Pamela A Webb, University of Minnesota

Denise Moody, Boston VA Research Institute

Grants Innovation Exchange

May 19, 2022

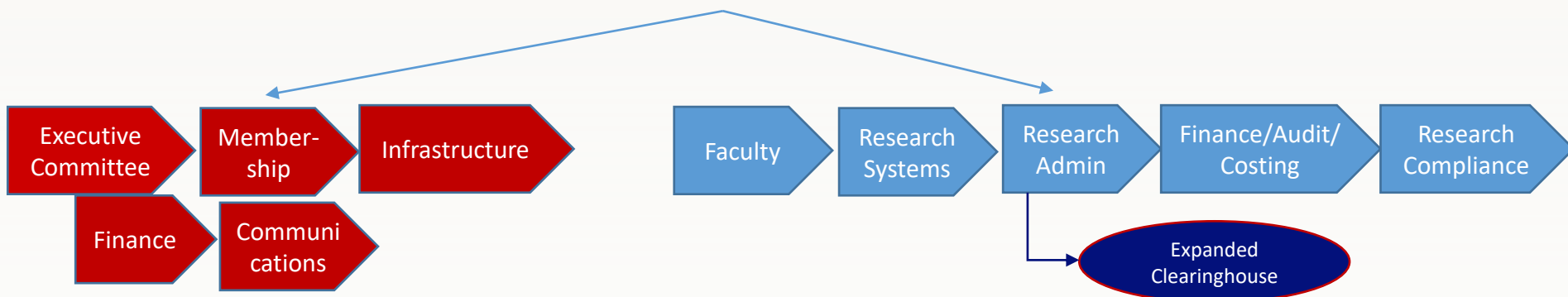


# Federal Demonstration Partnership (FDP)

thefdp.org

Association of federal agencies, academic and nonprofit research institutions, and research policy organizations convened via GUIRR that work together in a collaborative initiative to **streamline the administration of federally sponsored research**

- **Mission:** Researchers doing science, not administration
- **Activities:** Faculty and administrators talk face-to-face with agency decision-makers to test new ways of doing things before putting them into effect (“demonstrations”)
- **Members:** 217 institutional recipients of federal funds and 10 federal agencies (AFOSR, AMRMC, ARO, DHS, EPA, NASA, NIH, NSF, ONR, USDA)





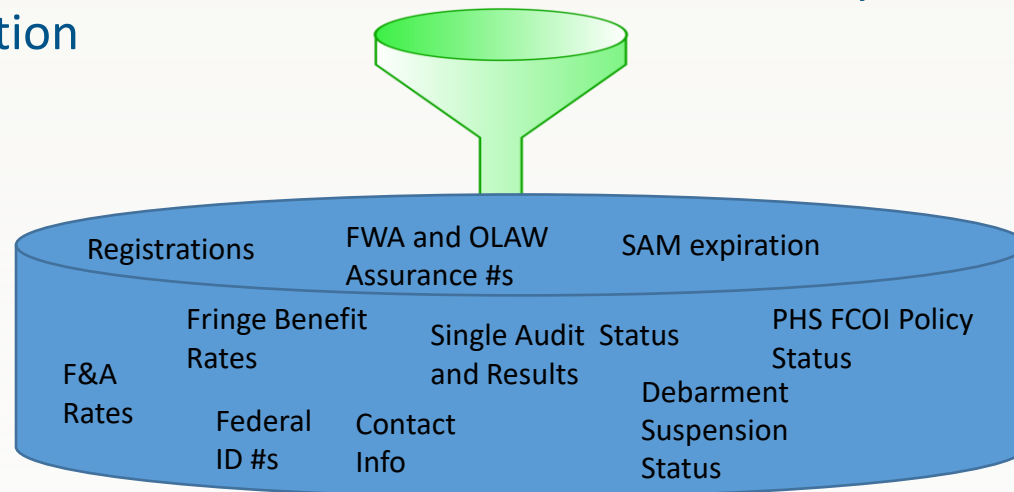
# Expanded Clearinghouse-Origin

**2011** PHS Financial Conflict of Interest Clearinghouse launched

- By 2018 – 1150 entities had joined the FCOI Clearinghouse
- By 2022 – 1396 entities

**2014** FDP members collectively driven to distraction with each other's multi-page "Subrecipient Commitment Forms" attempting to document compliance with federal subaward requirements on a transaction-by-transaction basis

**2015** FDP collects and analyzes 133 Subrecipient Commitment forms from its then 154 members and discovers mostly similar entity-level information





# Problem Requiring a Solution

Subrecipient Monitoring Programs include forms, forms, and more forms:

- **Entity-based** data to perform risk assessment
- **Project-based** information to perform non fiscal/audit compliance and risk assessment reviews per project
- **Annual audit updates**
- **Conflict of interest forms**



- Collected at **various times**, sometimes **multiple times per project**
- Entity Information typically **not maintained centrally** (even if electronic, only allow one person to complete form or include other limitations)



# Expanded Clearinghouse is born!

## Initial question to be answered by the Pilot:

- 1) Is a standardized, streamlined subrecipient entity data repository feasible?
- 2) Will such a repository reduce data collection and admin burden for both pass-through entities and subrecipients?
- 3) Can such a repository be successfully maintained by participants and Expanded Clearinghouse Team/FDP Staff?



# The Beauty of a Clearinghouse

- Online resource to house entity-based information
- Entity based forms would no longer be needed
- Institutions enter their information once, and update annually or as needed
- Entity information always available
  - Real time
  - Does not hold up proposal, subaward or invoicing
  - Allows for entity risk assessment for new & annual
  - Streamline entity review and assessment process
  - Reduce resource needs at institutions





# Exp Clearinghouse-Development

## Development Phases

- Agreed on data elements
- Via excel worksheet/form
- Web-based repository
- Web system developed
- Started with basics
- Added functionality
- Continue to enhance

## Cohorts

Implementation Date	# of Profiles	
March 2016	56	Pilot participants – wave 1
Aug 2016	73	Pilot participants – wave 2
July 2017	38	Pilot participants – wave 3
Aug 2018	45	Remaining Phase VII members
Sept 2019	25	Non-FDP member participants – 1 <sup>st</sup> cohort
Fall 2020 –Jan 2021	37	Phase VII new member profiles
July 1, 2021	14	Non-FDP member participants – 2 <sup>nd</sup> cohort
Oct 1, 2021	11	Non-FDP member participants – 3 <sup>rd</sup> cohort
Jan 1, 2022	9	Non-FDP member participants – 4 <sup>th</sup> cohort
April 1, 2022	6	Non-FDP member participants – 5 <sup>th</sup> cohort
July 1, 2022	7	Non-FDP member participants – 6 <sup>th</sup> cohort



# Exp Clearinghouse Repository



**FEDERAL DEMONSTRATION PARTNERSHIP**  
Redefining the Government & University Research Partnership

HOME | DIRECTORY



## Quick Links

ABOUT FDP

CHAIR AND VICE CHAIR

FDP MEMBERS

CURRENT INITIATIVES

MEETINGS

RESOURCES

COMMITTEES

FDP SUBAWARD FORMS

MAILING LISTS

FDP FCOI CLEARINGHOUSE

FDP EXPANDED CLEARINGHOUSE

## FDP Expanded Clearinghouse

Institution Name

Primary DUNS Number

The list of institutions displayed below contains participants in the FDP Expanded Clearinghouse pilot. There are 78 member institutions currently participating with 127 profiles. The pilot is not open to new members at this time, but interested FDP institutions may express interest for later inclusion in the pilot by emailing Co-Chair Lynette Arias at [ariasl@uw.edu](mailto:ariasl@uw.edu).

Click on the organization's name to download their profile.

**Note:** Unless links are provided in the attachment column on the right below, rate agreement and audit links are included within the actual Profile document.

## LOGIN

- [Login](#) (User ID and Password required)
- [Lost your password?](#)
- [Create New FDP Login](#)

## FDP Contacts

**Mailing Address:**  
500 Fifth Street, NW  
Washington, D.C. 20001  
Tel: (202)334-3994  
Fax: (202)334-1369  
E-mail: [fdp@nas.edu](mailto:fdp@nas.edu)



FDP Brochure 2016

Institution	Primary Duns No.	Primary Contact	Most Recent Update Date	Attachments
<a href="#">Arizona State University</a>	943360412	<a href="#">Kristy Macdonald</a>	8-17-16	
<a href="#">Brandeis University</a>	616845814	<a href="#">Paul O'Keefe</a>	8-5-16	
<a href="#">Brown University</a>	001785542	<a href="#">Patrice Carroll</a>	8-5-16	
<a href="#">California Institute of Technology</a>	009584210	<a href="#">David Mayo</a>	8-5-16	
<a href="#">Case Western Reserve University</a>	077758407	<a href="#">Diane Domanovics</a>	8-17-16	<a href="#">W-9</a>
<a href="#">Cedars Sinai Medical Center</a>	075307785	<a href="#">Matthew Kirk</a>	8-5-16	
<a href="#">Clemson University</a>	042629816	<a href="#">Sheila Lischwe</a>	8-17-16	
<a href="#">Colorado State University</a>	785979618	<a href="#">Dave Doty</a>	8-17-16	
<a href="#">Cornell University</a>	872612445	<a href="#">Mora Harris</a>	8-17-16	
<a href="#">Dana Farber Cancer Institute</a>	076580745	<a href="#">Tina Rimal</a>	8-5-16	<a href="#">Rate Agreement</a>
<a href="#">Duke University</a>	044387793	<a href="#">Jennifer McCallister</a>	8-5-16	<a href="#">Rate Agreement</a>
<a href="#">Emory University</a>	066469933	<a href="#">Holly Sommers</a>	8-17-16	
<a href="#">Florida A&amp;M University</a>	623751831	<a href="#">Glory Brown</a>	8-17-16	
<a href="#">Florida International University</a>	071298814	<a href="#">Roberto Gutierrez</a>	8-17-16	





# Key elements of system

- Dropdown Menus
- Warnings/Immediate Data Validation
- Flexible Navigation/Work-in-Progress Saves
- System User Accounts and Security
- Separation of Duties (Profile creation/certification/FDP Approval)
- Automated Workflow
- FDP Admin Functions:
  - Reports help identify obsolete data
  - Information on fields changed (for re-reviews)
  - Assignment of profiles to individual admin staff (Co-Chairs)
  - FDP Expanded Clearinghouse Help Desk
  - FDP Admin review (final profile review to enhance integrity)



URL: <https://fdpclearinghouse.org/>



**FEDERAL DEMONSTRATION PARTNERSHIP**  
Redefining the Government & University Research Partnership

[Home](#) [Participating Organizations](#) [Data Access](#) [Help](#) [Resources](#) [FDP Website](#)

## FDP Expanded Clearinghouse

Welcome to the FDP Expanded Clearinghouse online system. This publicly available website provides online organizational profiles containing entity-based information needed by pass-through entities when they are issuing subawards or monitoring their subrecipient entities. It is the result of the FDP Pilot Project that effectively demonstrated a significant reduction of administrative burden.

Participating Organizations (listed under "Participating Organizations" ) have agreed to review each other's published profiles in lieu of sending/receiving individual subrecipient commitment forms containing the information posted on their profile. Minor exchanges of data that are transaction/subaward specific (e.g., such as an IRB approval, Statement of Work, or budget) may occur between the pass-through entity and the subrecipient, provided that such exchanges do not require completion of data already appearing on the entity's published profile. Participating Organizations have also agreed to make their profile information fully available to the public and ensure the information is up-to-date.

## What information is available in the organization profiles?

Data included for each published organizational profile has been certified as correct by an applicable institutional official, reviewed for accuracy by the FDP Expanded Clearinghouse Subcommittee, and includes the following:

- Most recent Single Audit
- F&A and fringe benefit rates
- Suspension and debarment
- PHS financial conflict of interest policy
- Federalwide Assurance number and other compliance-related information
- Federal identifiers (DUNS/UEI, EIN, CAGE, etc.), and
- Organizational contact information (authorized official, FFATA, financial, COI, etc.) that are commonly needed for various types of subawards.



# Participating Organizations



**FEDERAL DEMONSTRATION PARTNERSHIP**  
Redefining the Government & University Research Partnership

[Home](#) [Participating Organizations](#) [Data Access](#) [Help](#) [Resources](#) [FDP Website](#)

## Participating Organizations

This list of Participating Organizations contains participants in the FDP Expanded Clearinghouse initiative. All FDP member organizations are included.

Please click on a Participating Organization's name to view their Profile. Once a Profile is opened you can tab through 6 sections of information on the Profile. You may also print an organization's Profile once you have selected the Profile by clicking the Print button in the top right corner of the Profile.

If you represent a non-member organization which is not represented in the clearinghouse and you would like to add a profile for your organization, please refer to [Joining the Expanded Clearinghouse](#)

Show  organizations

Search

Organization (Common) Name	Primary DUNS	UEI	Primary Contact	FDP Member	Last Published On
<a href="#">Albert Einstein Healthcare Network</a>	148406911	EG5WUCPVAJT9	Mary Klein	No	03-16-2022
<a href="#">Allen Institute</a>	137210949	NFHEUCKBFMU4	Maria Gonzalez-White	Yes	11-08-2021
<a href="#">Ann &amp; Robert H. Lurie Children's Hospital Of Chicago</a>	074438755	XJ7MMPHBMGM7	Robin Lewis	No	05-03-2022
<a href="#">Arizona State University</a>	943360412	NTLHJXM55KZ6	Kristy Macdonald	Yes	05-04-2022
<a href="#">Arkansas Children's Research Institute (ACRI)</a>	002593692	K4FYB2EJVL32	Phaedra Yount	No	07-26-2021
<a href="#">Auburn University</a>	066470972	DMQNDJDHTDG4	Gene Taylor	Yes	11-16-2021

Search by organization name, DUNS or UEI



# Entity Profile Tabs



**FEDERAL DEMONSTRATION PARTNERSHIP**  
Redefining the Government & University Research Partnership

[Home](#) [Participating Organizations](#) [Data Access](#) [Help](#) [Resources](#) [FDP Website](#)

FDP Member Organization

University of Washington

Print

General Information

Contacts

Registrations & IDs

Certifications

Audits

Assurances

Authorization

- General Information
- Contacts
- Registrations & IDs
- Certifications
- Audits
- Assurances
- Authorization



# General Information Tab

FDP Member Organization

University of Washington

Print

General Information

Contacts

Registrations & IDs

Certifications

Audits

Assurances

Authorization

## General Information

Legal Entity Name	University of Washington
Common Name	University of Washington
Address	4333 Brooklyn Ave NE Seattle, WA 98195-9472
Congressional District	WA-007
EIN	91-6001537
DUNS	605799469
Federal/SAM.gov UEI	HD1WMN6945W6
Is entity a member of the FDP?	Yes



# Contacts Tab

FDP Member Organization

University of Washington

Print

General Information

Contacts

Registrations & IDs

Certifications

Audits

Assurances

Authorization

## Contacts

Primary Contact

Carol Rhodes  
Director, OSP  
[osp@uw.edu](mailto:osp@uw.edu)

Authorized Profile Certifier

Carol Rhodes  
Director, Office of Sponsored Programs  
[carhodes@uw.edu](mailto:carhodes@uw.edu)

Primary Authorized Signing Official

Carol Rhodes  
Director, Office of Sponsored Programs  
[carhodes@uw.edu](mailto:carhodes@uw.edu)

SAM Point of Contact

*SAM Government Business POC*

Carol Rhodes  
Director, OSP  
[osp@uw.edu](mailto:osp@uw.edu)



# Registrations & IDs Tab

FDP Member Organization

University of Washington

Print

General Information

Contacts

Registrations & IDs

Certifications

Audits

Assurances

Authorization

## Registrations

### Entity Identification Numbers and Codes

Primary Employer Identification Number (EIN)	91-6001537
Primary Data Universal Numbering System (DUNS)	605799469
Federal/SAM.gov UEI	HD1WMN6945W6
IRS Tax Determination Letter	Available Upon Request
IRS W-9	<a href="#">Download</a>
Primary North American Industry Classification System (NAICS) Code	611310
System for Award Management (SAM) Status	Active
SAM Expiration Date	10-29-2022



# Certifications Tab

FDP Member Organization

University of Washington

Print

General Information

Contacts

Registrations & IDs

Certifications

Audits

Assurances

Authorization

## Certifications

### Conflict of Interest

Conflict of Interest certification

Entity is registered in the FDP FCOI Clearinghouse certifying that it has an active and enforced Conflict of Interest Policy that is consistent with the provision of 42 CFR part 50, Subpart F "Responsibility of Applicants for Promoting Objectivity in Research and 42 CFR part 94."

### Affirmative Action

Affirmative Action

Written affirmative action program developed and on file

### FFATA

Is entity exempt from reporting compensation?

Yes





# Audits Tab

FDP Member Organization

University of Washington

Print

General Information

Contacts

Registrations & IDs

Certifications

Audits

Assurances

Authorization

## Audits

### Single Audit

Is entity subject to the Single Audit requirements in 2 CFR part 200?	Yes
Most recent fiscal year with completed Single Audit	2020
Is entity qualified as low-risk entity by Auditor or as defined in 2 CFR 200?	Yes
Did the entity's most recent Single Audit contain any findings?	No
Did the entity's most recent Single Audit contain any Significant Deficiencies?	No
Did the entity's most recent Single Audit contain any Material Weaknesses?	No
Most recent complete Single Audit Report	<a href="https://ofm.wa.gov/accounting/financial-audit-reports/single-audit-report/2020-single-audit-report">https://ofm.wa.gov/accounting/financial-audit-reports/single-audit-report/2020-single-audit-report</a>
Single Audit Report from previous fiscal year	<a href="https://www.ofm.wa.gov/accounting/financial-audit-reports/single-audit-report/2019-single-audit-report">https://www.ofm.wa.gov/accounting/financial-audit-reports/single-audit-report/2019-single-audit-report</a>



# Assurances and Authorization Tabs

FDP Member Organization

University of Washington

Print

General Information

Contacts

Registrations & IDs

Certifications

Audits

Assurances

Authorization

## Assurances

### Human Subjects

*US Department of Health and Human Services / Office of Human Research Protection (HHS/OHRP)*

Does entity have HHS/OHRP Human Subjects Federal Wide Assurance (FWA) approval? Yes

Primary HHS / OHRP Human Subjects FWA Number FWA00006878

Primary HHS / OHRP Human Subjects FWA Expiration Date 01-29-2025

Primary D

FDP Member Organization

Associati

Is entity A

University of Washington

Print

General Information

Contacts

Registrations & IDs

Certifications

Audits

Assurances

Authorization

## Authorization

Published On: 01-24-2022

Published By: Admin User



# Print/PDF Function

Print | PDF

5/18/22, 3:50 PM

Federal Demonstration Partnership Expanded Clearinghouse



## FEDERAL DEMONSTRATION PARTNERSHIP

Redefining the Government & University Research Partnership

FDP Member Organization

University of Washington

Print

### General Information

Legal Entity Name	University of Washington
Common Name	University of Washington
Address	4333 Brooklyn Ave NE Seattle, WA 98195-9472
Congressional District	WA-007
EIN	91-6001537
DUNS	605799469
Federal/SAM.gov UEI	HD1WMN6945W6
Is entity a member of the FDP?	Yes



# Getting Help


[Data Access](#) [Help](#) [Resources](#) [FDP Website](#)

## Getting Help

### Instructions

[Click here](#) to access the Instruction Manual for Users. Please note this manual is intended for organizations preparing to join the Expanded Clearinghouse and covers profile creation, completion and publishing. General public use (without a login) is covered in sections 9 of the manual.

[Click here](#) to access the Organizational Data Entry Worksheet, an optional tool available to aid institutions who wish to collect their information prior to entering data into the Expanded Clearinghouse.

Throughout the site, you may click on the  question mark icons to go directly to a specific section of the instructions.

### Contact Us

Questions, problems, or suggestions? (login required)

[Send us a message](#)

Or email [echelp@thefdp.org](mailto:echelp@thefdp.org)

### Joining the Expanded Clearinghouse

The FDP is inviting a limited number of non-FDP members to participate in the Expanded Clearinghouse on a quarterly basis. Annual subscription fees for Expanded Clearinghouse participation by non-FDP members are \$1000 per year for 2021-2023 and \$1500 per year for 2024-2026 and are pro-rated if joined mid-year.

The Expanded Clearinghouse is currently only able to accommodate Single Audit entities. FDP has not made a decision at this time as to when non-Single Audit entities will be invited into the Clearinghouse.

Organizations interested in joining the Expanded Clearinghouse can learn more about the requirements by reviewing the [Profile Participation Agreement](#) and by adding themselves to the waitlist for consideration of future enrollment [here](#).

### More Information

More information about the FDP Expanded Clearinghouse Subcommittee and activities can be found on the [FDP Website](#).

### Profile Participation Agreement

[Click Here](#) to review the Profile Participation Agreement.

**Systems Help: [EChelp@thefdp.org](mailto:EChelp@thefdp.org)**



# Pilot Burden Reduction Tracking

July 1, 2016 – June 30, 2017

- Piloteers: 127 campuses of 111 FDP institutions
- Exchanged 10,800 transactions
- Results:
  - Estimated saving **1.6 hours/transaction**
  - Saved more than **17,500 staff hours**
  - Reported a **98.6% user satisfaction** rate
  - Gained deeper understanding of subaward transactions:
    - 34% new subs, 51% mods, remaining = unknown
    - 62% DHHS (mainly NIH), 12% private, remaining = variety
    - 81% subs on grants, 11% cooperative agreements, 6% contracts
    - 91% cost-reimbursement, 4% fixed price



# Cohort 1 – Tracking Form

**SAMPLE PILOT INSTITUTION TRACKING FORM**



**EXPANDED CLEARINGHOUSE PHASE I TRACKING FORM**

REPORTING ENTITY NAME:	University of FDP
REPORTING CONTACT NAME:	P. Piloteer
REPORTING CONTACT EMAIL ADDRESS:	P. Piloteer@FDP.edu

REPORTING PERIOD:	03/15/2016 - 06/30/2016
LAST UPDATED:	5/5/2016

INTERNAL TRACKING NUMBER (OPTIONAL)	ISSUE DATE	FULLY EXECUTED DATE	SUBAWARD ISSUED TO	PRIME SPONSOR NAME	PRIME AWARD TYPE	SUBAWARD TYPE	POINT OF USE			NOTES/COMMENTS (OPTIONAL)
							PROPOSAL (OPTIONAL)	SUBAWARD ISSUANCE	SUBAWARD MODIFICATION	
M12345	2/1/2016	2/5/2016	Brandeis University	NIH	Grant	Cost Reimbursement			1	Mod signed
M543211	2/1/2016		Cedars-Sinai Health System	NSF	Cooperative Agreement	Cost Reimbursement	1	1		Out for sub signature.
M54896	2/2/2016	2/4/2016	University of Texas, Austin	NIH	Other	Fixed Price			1	Mod signed
SUB 100001	2/3/2016	2/3/2016	Duke University & Duke University Medical Center	NIH	Grant	Cost Reimbursement	1	1		Unilateral sub issued.
NSF111111	2/4/2016		Northwestern University	NSF	Grant	Cost Reimbursement		1		



# Benefits of Clearinghouse

- The significant burden reduction continues to be real, even if not tracked as during the pilot phase
- The EC created a national norm to make F&A rates/fringe benefit rates public
- The security protocols involved in publishing and use has improved quality of data for all stakeholders
  - The API also allows for easy re-use/re-deployment but in a way that promotes data being current
- The intuitive interface with no login needed promulgated wide-spread use
- The reports and email notifications helps all users stay current
- The information creates data that can help with federal policy formation or adoption
- Safety in numbers



# Milestone Achieved!!!

**304 Expanded Clearinghouse  
Profiles as of May 18th!!!**

**217 FDP members**

**87 Non-FDP members**





# How to use and/or get involved?

- All Profiles are publicly available
  - If your organization does not have a profile in the Clearinghouse, you are welcome to still use for subrecipient entity monitoring
- Participation is a condition of FDP membership
  - Membership in the FDP is not currently open. Will open again with the next phase which begins Jan 2026
- Non-FDP members are invited in from a waiting list on a quarterly basis. Annual fee = \$1,000 currently
  - **Waiting List Form/Survey:**  
<https://www.surveymonkey.com/r/DV7FF2S>
  - Waitlist limited to U.S single audit entities at this time
- System-to-system (S2S) profile data API available for participating institutions



# Expanded Clearinghouse Subcommittee

## Co-Chairs

- Amanda Hamaker, Purdue University
- Denise Moody, Boston VA Research Institute
- Robert Prentiss, Yale University

## Members

- Lynette Arias, University of Washington, Senior Advisor, Emeritus Co-Chair
- Neal Hunt, Vanderbilt University Medical Center
- Emily Lacy, University of Texas Dallas
- Jackie Lucas, City of Hope
- Carrie MacCue - The Research Foundation for the State University of New York
- Chris Renner, Vanderbilt University Medical Center
- Jennifer Rodis, University of Wisconsin, Madison
- Julie Thatcher, Institute for Systems Biology
- Pamela Webb, University of Minnesota, Senior Advisor, Emeritus Co-Chair

**Systems Help: [EChelp@thefdp.org](mailto:EChelp@thefdp.org)**  
**General Questions: [ExpClearinghouse@thefdp.org](mailto:ExpClearinghouse@thefdp.org)**



## Next Steps

- The Expanded Clearinghouse Subcommittee currently makes use of federal websites to validate the data submitted by participating organizations, and to prompt organizations to make updates.
- Long-term, we are looking for opportunities to auto-populate Expanded Clearinghouse data from federal websites using system-to-system data access. Care must be taken to ensure data integrity.
- Audit data is particularly complex, and critical for the subrecipient monitoring process. Operation of the Federal Audit Clearinghouse will transfer from the US Census Bureau to the General Services Administration (GSA) in October 2022, and the Subcommittee is looking forward to new opportunities to use the data in the updated website.



# Wrap-Up, Questions & Resources

- Expanded Clearinghouse Subcommittee Webpage  
<https://thefdp.org/default/committees/research-administration/expanded-clearinghouse-subcommittee/>
- FDP Clearinghouse web-based system  
<http://fdpclearinghouse.org/>
- Systems Help:  
[EChelp@thefdp.org](mailto:EChelp@thefdp.org)
- General Questions:  
[ExpClearinghouse@thefdp.org](mailto:ExpClearinghouse@thefdp.org)